

Jorgensen Land & Cattle

32nd Annual Production Sale

Monday, April 19, 2004 • 1 p.m.

Winner Livestock Auction, Winner, SD

Selling 130 Bulls by these Featured Sires:

IDEAL 7451 OF 8103 4465

BW +4.2; WW +48; Milk +27; YW +100

IDEAL 8296 OF 1254 4465

BW +.7; WW +41; Milk +15; YW +73

BON VIEW NEW DESIGN 878

BW +1.4; WW +41; Milk +30; YW +81

BALDRIDGE GURU 427

BW +3.6; WW +48; Milk +19; YW +84

MCBEE WMR SUPER X 745

BW +4.1; WW +49; Milk +11; YW +78

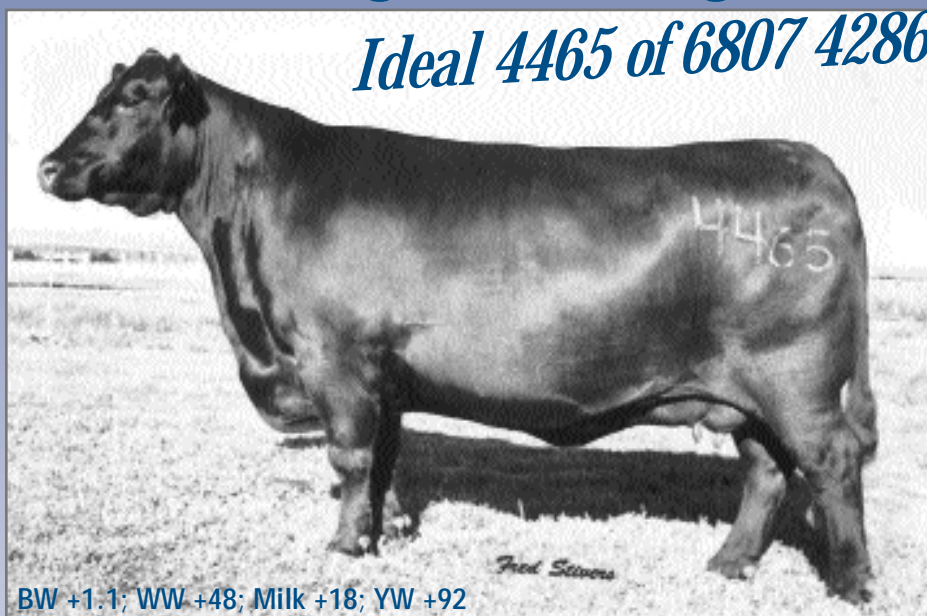
IDEAL 1283 OF 7291 7413

BW +2.8; WW +40; Milk +9; YW +76

*Feed
Conversion
at its
BEST!!*

62% of the offering traces to this great female!

Ideal 4465 of 6807 4286



BW +1.1; WW +48; Milk +18; YW +92

"4465" exemplifies GROWTH in her birth to yearling EPD's and FEED EFFICIENCY, as her tested progeny are 18% above average on feed conversion and she herself is positive for %IMF.

"4465" is the dam of "7451" and "8296," leading sires in the Jorgensen herd and past winners of Jorgensen's feed conversion tests. Progeny of these two sires are featured in this event.



Jorgensen Land & Cattle
PARTNERSHIP

31250 265th Street
Ideal, SD 57541-9320
Toll Free: 1-800-548-BULL (2855)
or 605-842-3217

Sale
Managed by:



517/ 546-6374
www.cotton-associates.com

• Free Regional
Delivery of Bulls

• Bulls can be
inspected

April 17 - 18 at
Winner Livestock
Auction